

6

5

4

3

2

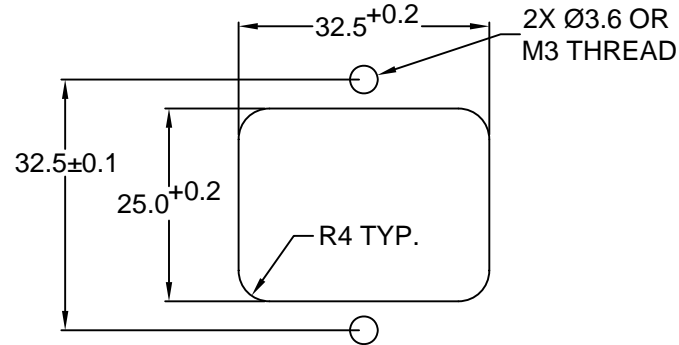
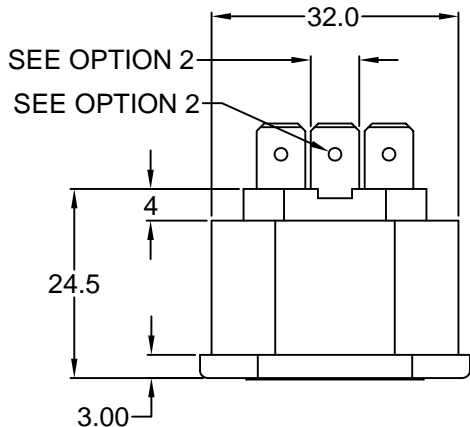
1

**MATERIAL AND FINISH:**

Insulator: Polycarbonate, UL-94V-0 rated  
Contacts: Brass

**ELECTRICAL SPECIFICATIONS:**

Current rating: 10 A/15 A  
Voltage rating: 250 VAC  
Insulation resistance: 100 Mohm min. at 500 VDC  
Dielectric withstanding voltage: 2000 VAC for one minute



**RECOMMENDED  
PANEL CUTOUT**

**ORDERING CODE:**

43R03-2 \_ \_ \_  
1 2 3

**1) COLOR**


- 1 = BLACK
- 2 = GRAY





**2) TERMINAL OPTIONS**

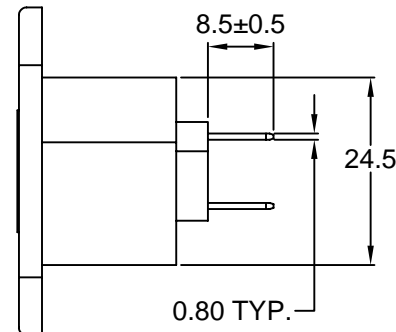
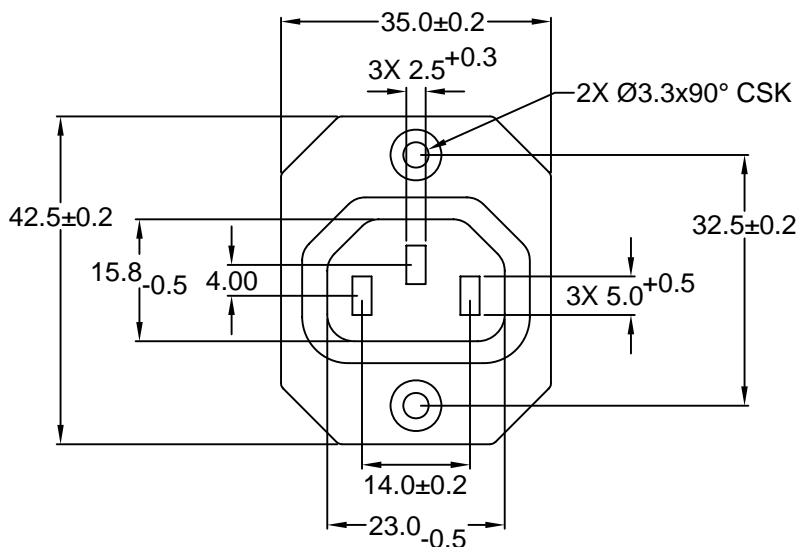
- 1 = .187(4.8) WITH Ø1.4
- 2 = .250(6.3) WITH Ø1.65

**3) ELECTRICAL CIRCUIT CONFIGURATION**

1 = 10A 250V 70°C 

15A 250V 70°C   

2 = 10A 250V 120°C   
15A 250V 120°C   



**RoHS  
COMPLIANT**

REVISIONS
CHANGE
DATE
REV
CHNG
CHK
APPR

TOLERANCE UNLESS OTHERWISE SPECIFIED		
X	±	1
X.X	±	0.4
X.XX	±	0.20
DRAWN BY	GQ	DATE: 10/05/01
CHECK BY	TD	DATE: 10/10/01
APPR BY	PB	DATE: 10/10/01

**Power Dynamics, Inc.**

Phone: 973 560-0019 Whippany, New Jersey Fax: 973 560-0076

PART: 10A/15A IEC 60320 APPL. OUTLET; QC  
TERMINALS; CROSS FLANGE, PANEL MOUNT

PART #: <b>43R03-2XXX</b>		SHEET 1 of 1
SIZE: A	ALL DIMENSIONS FOR REFERENCE ONLY DIMENSIONS ARE IN MILLIMETERS	
SCALE: NTS	REV:	